

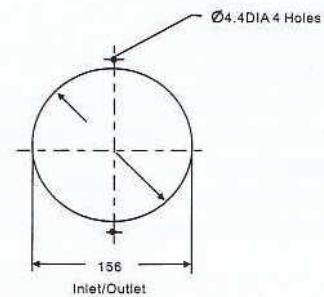
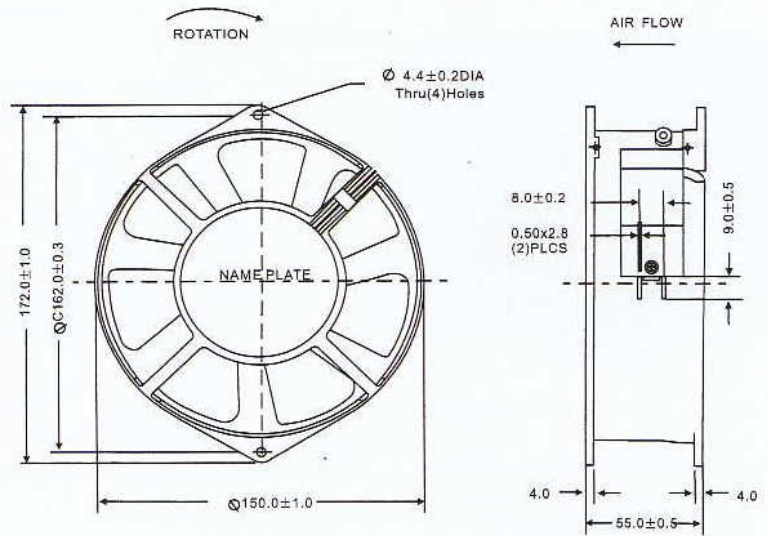


尺寸 Size:170mmx150mmx55mm  
 风量 Airflow:289~408m<sup>3</sup>/hr  
 170~240CFM

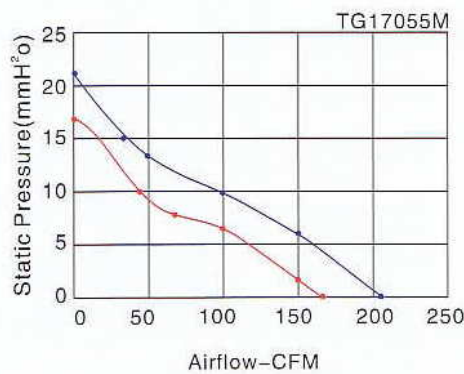
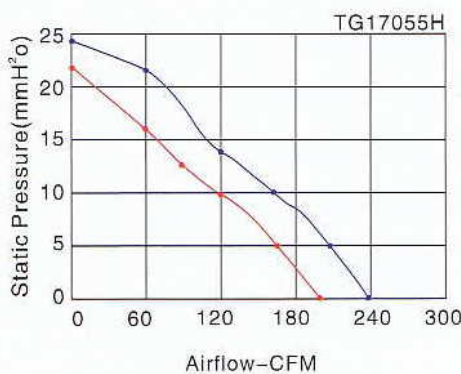
重量 Weight:1200g  
 噪音 Noise:47~54DBA  
 风叶 Impeller:Iron Leaf  
 外框 Frame:Aluminum Alloy  
 端子 Terminals:0.5mm  
 引线 Lead Wire:The Mostable Wire (Optional)  
 马达 Motor:Shaded Pole External Rotor  
 Induction Motor

安规认证 Certification:UL > CUL > TUV > CE >

温度范围 Operation Temperature:-10°C~+105°C



Model (型号)	Bearing System (轴承型式)	Voltage VAC (电压)	Freq. Hz (频率)	Current A (电流)	Power W (功率)	Speed RPM (转速)	Noise dBA (噪音)	Air Flow (风量)		Phase (相数)	Capacitor (电容)
								M3/hr	CFM		
TG17055HA,B	Ball	100~125	50/60	0.6	46	2700/3100	50/54	340/408	200/240	1	/
TG17055HA <sub>2</sub> B		200~240	50/60	0.3	46	2700/3100	50/54	340/408	200/240	1	/
TG17055MA,B	Ball	100~125	50/60	0.5	42	2400/2800	47/50	289/355	170/210	1	/
TG17055MA <sub>2</sub> B		200~240	50/60	0.26	42	2400/2800	47/50	289/355	170/210	1	/



Key  
 60Hz  
 50Hz